

PPHU EKOLOT	REPAIR INSTRUCTION No. IR-04/2010		str. 1/14
	MAIN UNDERCARRIAGE	J.13.600.00.02	

MAIN WHEEL TOE-IN SETTING

1. Place the plane on the supports. Disassemble the main wheel and axle.

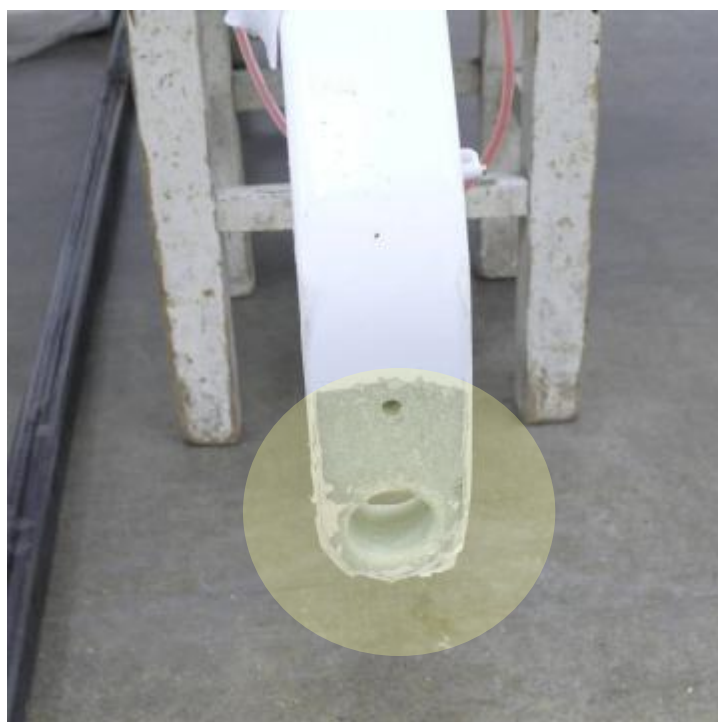


2. The axle holes should be enlarge by the milling or grinding by the fuselage axis side. It is FORBIDDEN to enlarge the diameter by the outside of the leg (look photos listed below)





3. The surface adjacent to the brakes disc and the axle hole clean to remove the paint and next degrease.





4. The axle and screw with the washer clean off the glue and LOCITE fent and degrease. The internal thread on the axle thread to using M16x1.5 screwtap and degrease.



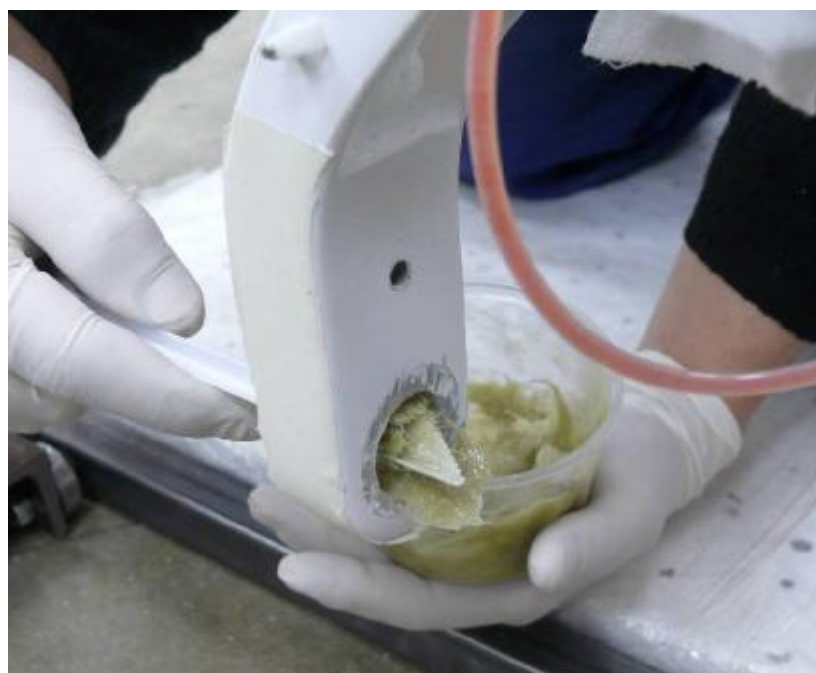


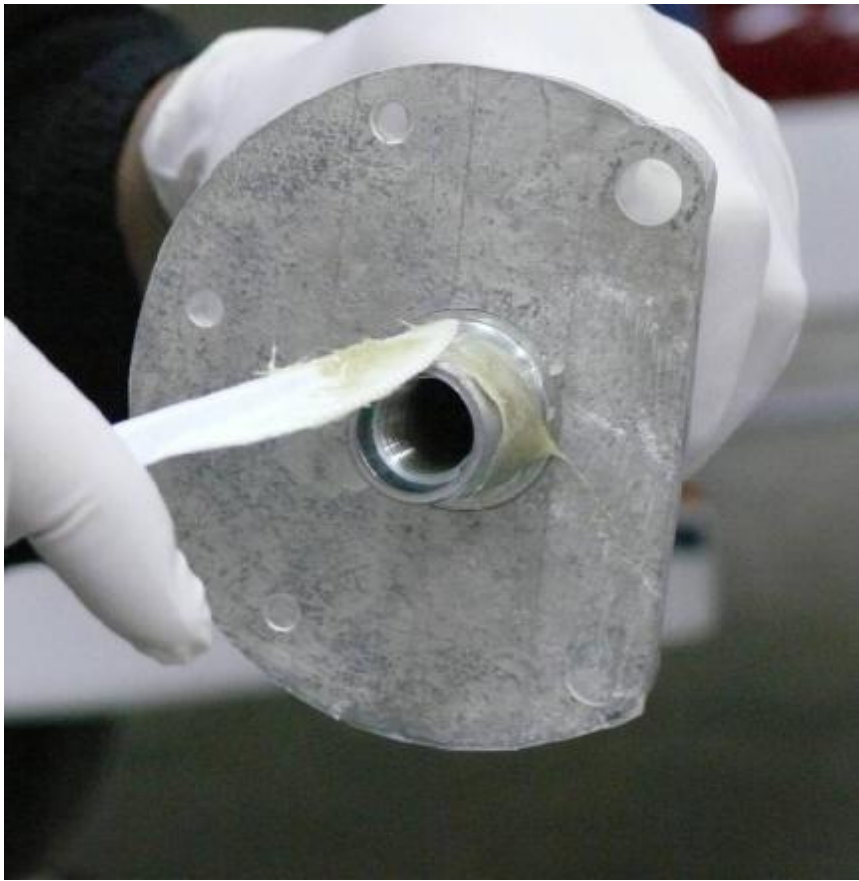
5. The side surfaces of the leg cover with the paper tape

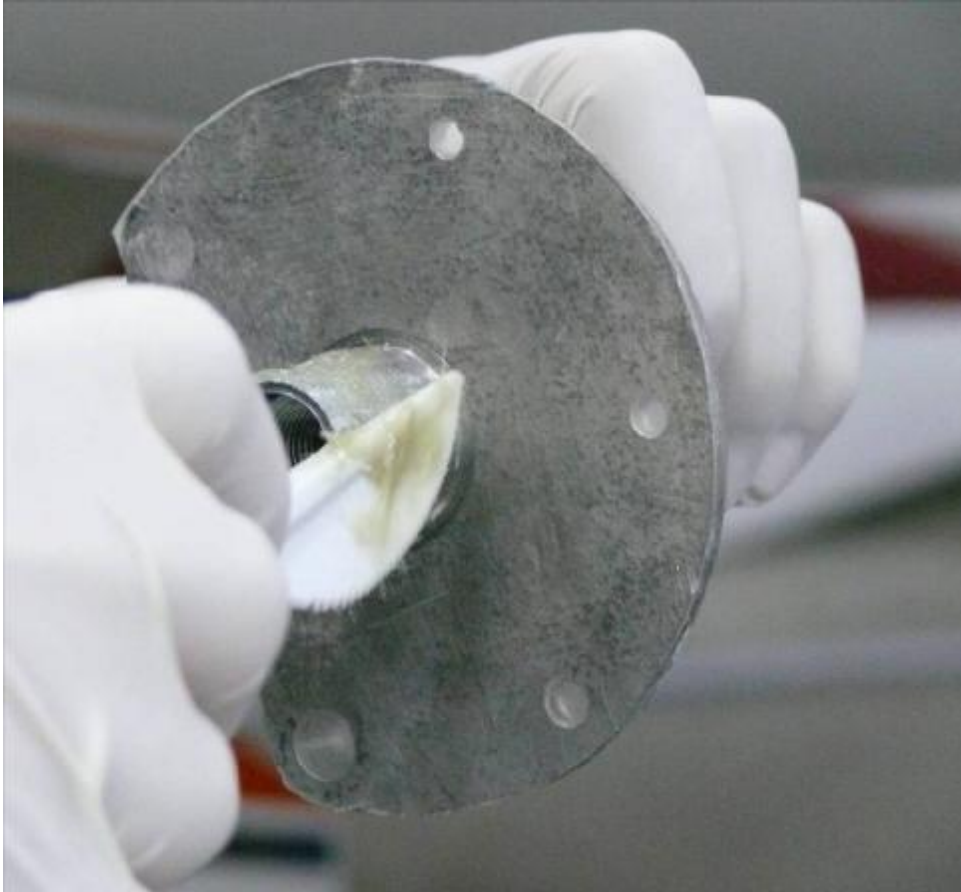




6. The wheel's axle hole, the conic surface of the axle and surface on the leg grease with cutting glass roving mixed with resin. Metal parts wax and eventually cover with scotch tape to protect them against glue to the leg.



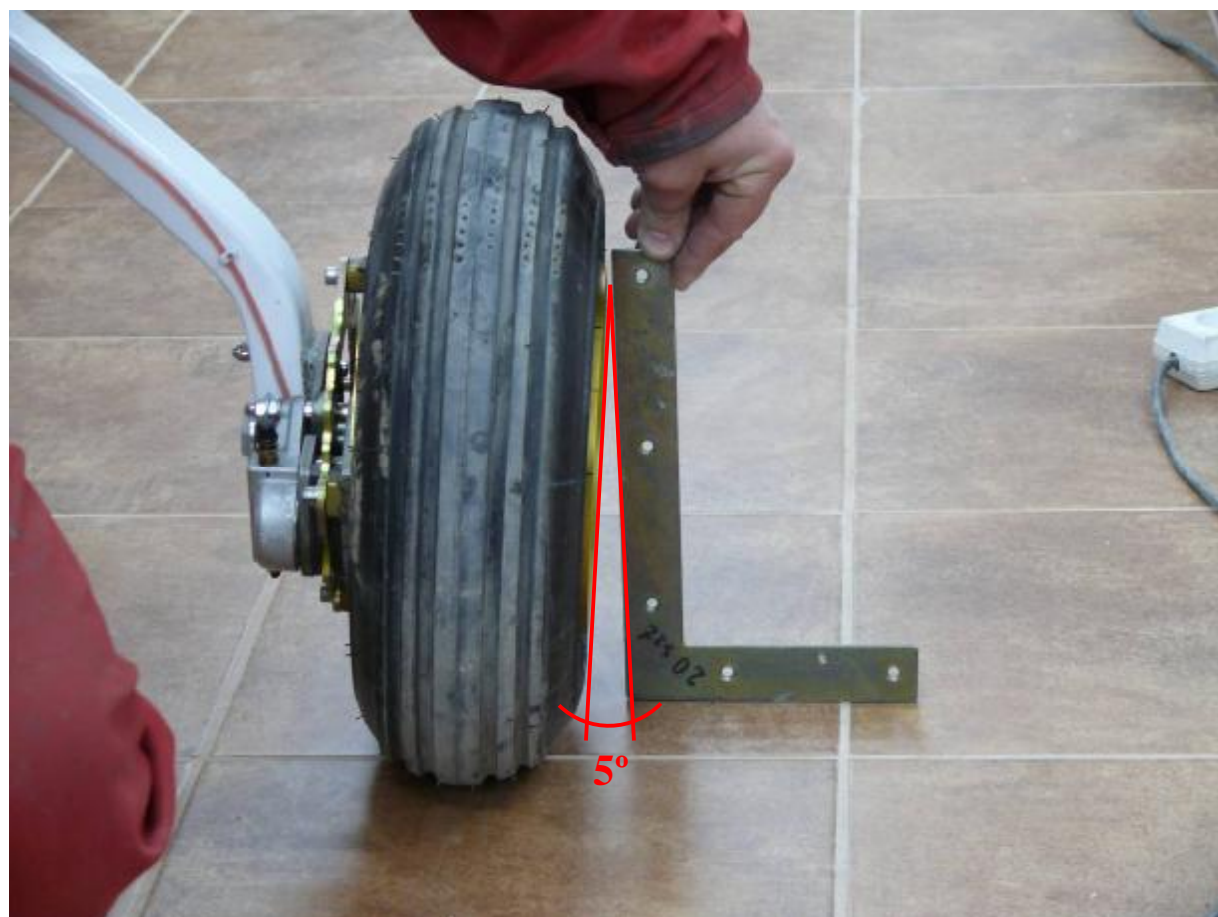




7. The axle with the disc put on the leg and screw with the bolt..

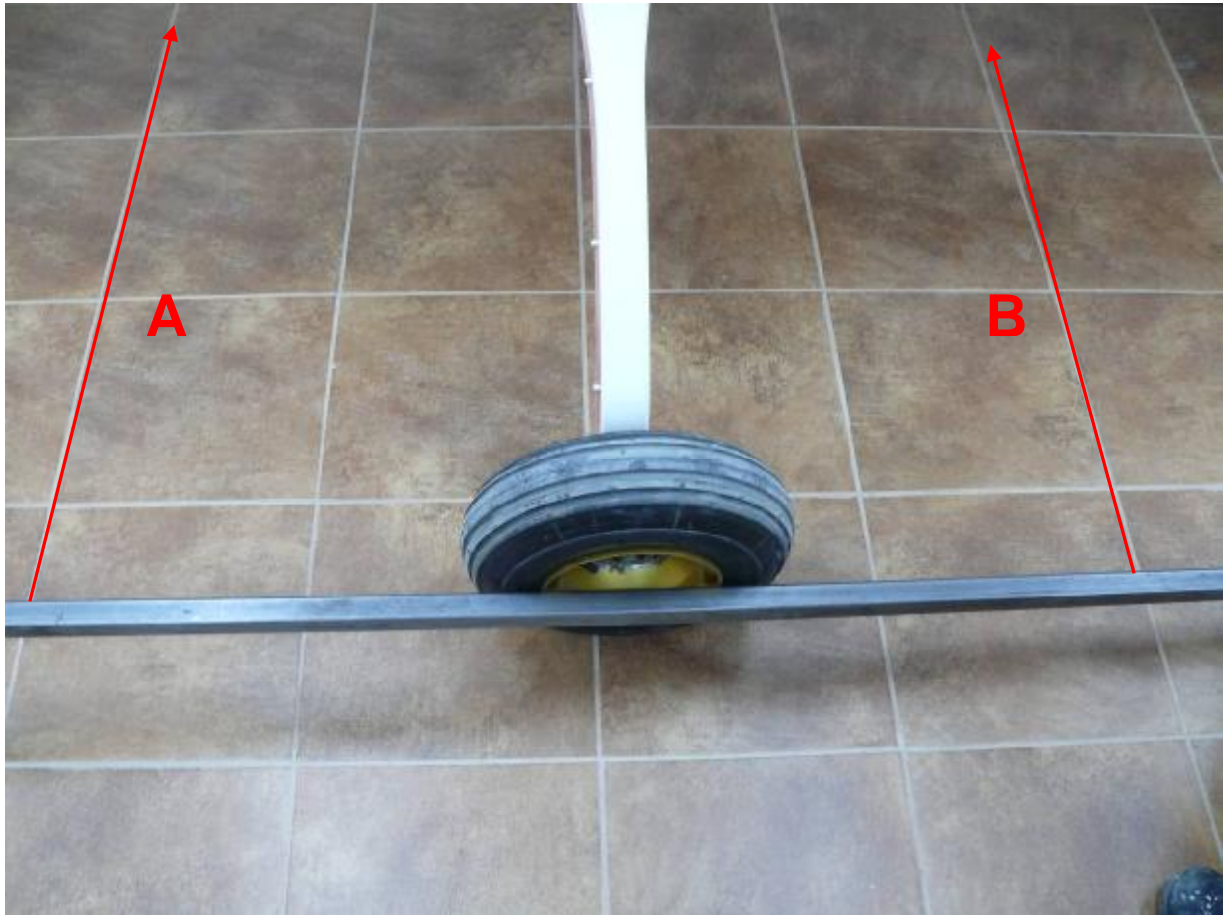


8. The axle hale to be set in position as the wheel will be out of plumb at 5°.



PPHU EKOLOT	REPAIR INSTRUCTION No. IR-04/2010		str. 10/14
	MAIN UNDERCARRIAGE	J.13.600.00.02	

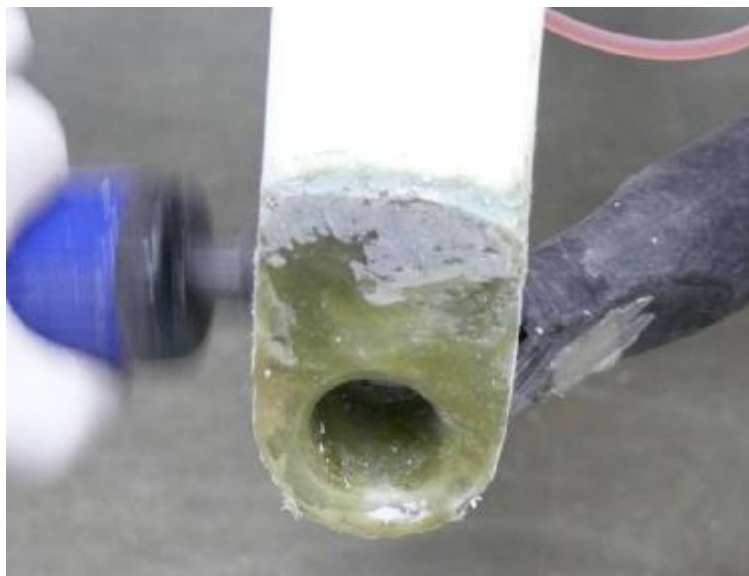
9. It has to be also set the parallelism of both wheels. In order to do this fit the long straight profiles to both wheels and measure the distance between the profiles At front and rear of the wheels (mark **A** i **B** on photos below). The distances have to be equal. Make the measures on possible maximum distance from the wheels.



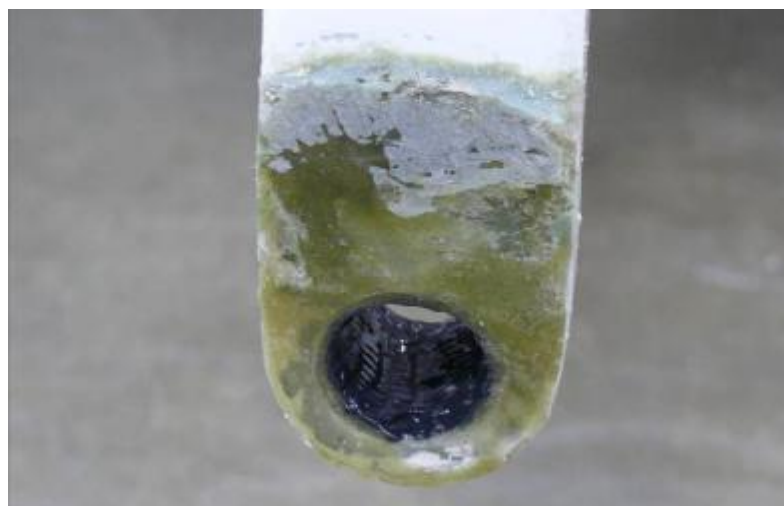
10. Leave the plane to complete resin hardening.
11. Remove the wheels with the axle and grind the leg to get flat surface at the places where the roving was placed.



PPHU EKOLOT	REPAIR INSTRUCTION No. IR-04/2010		str. 11/14
	MAIN UNDERCARRIAGE	J.13.600.00.02	



12. Paste the axle to the leg. The hole in the leg and the conic surface on the axle grease with two-compound glue for metal connections.



PPHU EKOLOT	REPAIR INSTRUCTION No. IR-04/2010		str. 12/14
	MAIN UNDERCARRIAGE	J.13.600.00.02	



13. Tighten up the axle with the bolt and the metal washer on the preparation
LOCTITE for thread connections. The bolt tight with the wrench.





PPHU EKOLOT	REPAIR INSTRUCTION No. IR-04/2010		str. 14/14
	MAIN UNDERCARRIAGE	J.13.600.00.02	

